

Urban Form Bench Aluminium

Model Number

UFBAL-6 (6 ft)
UFBAL-5 (ft)



The reasoning behind developing this all-aluminum version of our popular Urban Form Bench was two-fold. Firstly, to provide more options. The all metal gives a slick, modern look as opposed to plastic wood or traditional lumber. From a maintenance perspective the product minimizes the opportunity for vandalism; specifically, graffiti and carving. Should damage occur, touching up the metal is easy. The tubular metal seating surface is fitted to the frame with a no-weld design making individual bars simple to replace. In addition, the tubular aluminum bars are much stronger than typical slats leading to a very robust bench overall. As with the rest of our Urban Form series, the simple lines and consistent dimensions complement any contemporary setting.

Material Specifications

Marine Grade Aluminum Frame
Stainless Steel Hardware
Super Durable Powder Coating

Customized Solutions

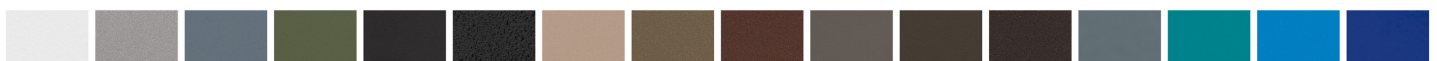
Custom Powder Coating
(Setup Charges May Apply)
Custom Lengths from 2 ft - 6 ft
INST-1 Stainless Steel Bolt-Down Kit

Recycled Content

Recycled Content by Weight: 10%
100% Recyclable

Product Dimensions

Total Height: 33 inches / 84 cm
Total Depth: 22 inches / 56 cm
Seat Height: 17.5 inches / 45 cm
Seat Depth: 16.5 inches / 42 cm
Length: 68 inches / 173 cm
Weight: 58 lbs / 26 kg



OVER 30 POWDER COATING COLOURS *Premium powder colours incur a surcharge per item

