

Urban Form All Metal Waste Receptacle

Model Number

UFTR-55-AL



This all-metal waste receptacle is the sibling to the Urban Form Large Capacity Waste Receptacle. Lighter in weight, this modern industrial version is built with metal sides. The metal can be customized. Wrap with graphics or customize with logos or descriptions on one or all sides. Innovative features such as the keyless hidden door latch system make emptying and cleaning a breeze for any maintenance worker. The 8" opening helps deter locals from emptying their household waste and keeps out water and critters. Go hands-free! This receptacle can be made with or without a foot operated pedal, giving the client a more hygienic option to garbage disposal.

Material Specifications

Marine Grade Aluminum Frame
Stainless Steel Hardware
Super Durable Powder Coating

Customized Solutions

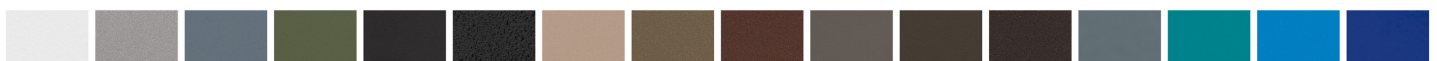
Custom Powder Coating (Setup Charges May Apply)
All Metal Sides
MFT-1 Foot pedal mechanism to open and close folding front loading door
Locking Door
Bottle and Can Recycler
Side Ashtray
INST-1 Stainless Steel Bolt-Down Kit

Recycled Content

Recycled Content by Weight: <10%
100% Recyclable

Product Dimensions

Total Height: 48 inches / 121 cm
Total Depth: 26.5 inches / 67 cm
Length: 26.5 inches / 67 cm
Capacity: 55 US Gal / 209 L
Weight: 100 lbs / 45.5 kg



OVER 30 POWDER COATING COLOURS *Premium powder colours incur a surcharge per item

