

Rutherford Backless Bench

Model Number

RSB-6
RSB-5
RSBNA-6



Elegant and functional, this backless bench from the Rutherford series has a modern angled leg design on all sides. The comfort of the seat is complimented by ample armrests which provide the user a way to lean and relax. The high profile of the armrests also reduces the likelihood of damage due to opportunistic skateboarders. This bench can be customized to lengths of 4 to 8 feet. It is available with or without armrests.

Material Specifications

Marine Grade Aluminum Frame
Stainless Steel Hardware
Super Durable Powder Coating
100% Recycled Plastic Slats
Western Red Cedar
Accoya Modified Pine
Hardened Bamboo

Customized Solutions

Custom Powder Coating
(Setup Charges May Apply)
Custom Lengths from 4 ft to 8 ft
Skate blocks
INST-1 Stainless Steel Bolt-Down Kit

Recycled Content

Recycled Content by Weight: 64%
100% Recyclable

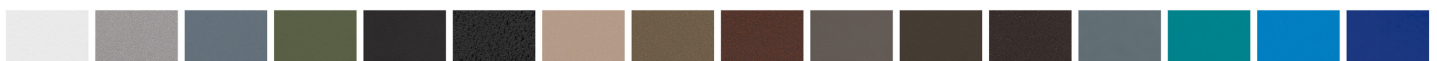
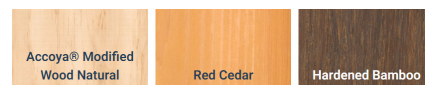
Product Dimensions

Total Height: 26.5 inches / 67 cm
Total Depth: 30.25 inches / 77 cm
Seat Height: 17.5 inches / 45 cm
Seat Depth: 22 inches / 56 cm
Total Length: 72 inches / 183 cm
Weight: 85 lbs / 39 kg

100% Recycled Plastic Lumber Colours



Unstained Natural Wood Alternatives



OVER 30 POWDER COATING COLOURS *Premium powder colours incur a surcharge per item

