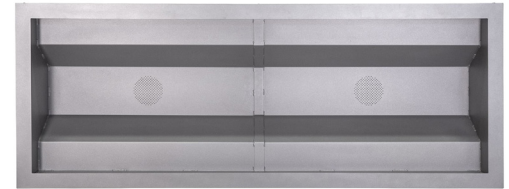


# Rutherford 4 Space Wheelchair Accessible Planter

Model Number

RPLWC-96-36 (4 Space)  
RPLWC-50-36 (2 Space)



The Wishbone Rutherford Wheelchair Accessible Planters are the perfect solution for creating accessible and beautiful gardens for individuals with mobility challenges. Designed with the guidelines of the ADA (American Disabilities Act), our planters are ADA compliant and come in two sizes to accommodate two and four wheelchairs, respectively. Crafted with an aluminum frame and recycled plastic lumber, our planters offer durability and require low maintenance. With a large planter bed, you can grow an abundance of fruits and vegetables, making it a great addition to senior homes or long-term care facilities. Our planters not only perform for years but also look great, making them a perfect addition to any outdoor space. Experience the joy of gardening for everyone with the Wishbone Wheelchair Accessible Planters.

## Material Specifications

Marine Grade Aluminum Frame  
Stainless Steel Hardware  
Super Durable Powder Coating  
100% Recycled Plastic Slats  
Western Red Cedar  
Accoya Modified Pine  
Hardened Bamboo

## Customized Solutions

Custom Powder Coating  
(Setup Charges May Apply)  
All Metal Sides  
Custom Branding on Side Panels  
Custom Lengths

## Recycled Content

Recycled Content by Weight: 30%  
100% Recyclable

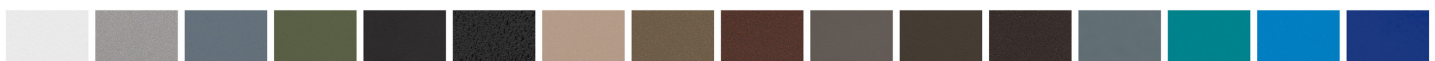
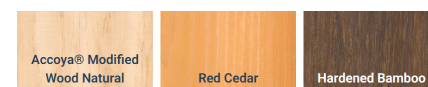
## Product Dimensions

Height: 34 inches / 86 cm  
Depth: 36.5 inches / 93 cm  
Length: 96.5 inches / 245 cm  
Weight: 148 lbs / 67 kg  
Soil Capacity: 20 Cubic Feet / 566 L

## 100% Recycled Plastic Lumber Colours



## Unstained Natural Wood Alternatives



**OVER 30 POWDER COATING COLOURS** \*Premium powder colours incur a surcharge per item



**Wishbone**  
site furnishings

#210-27090 Gloucester Way | Langley, BC CANADA V4W 3Y5  
1.866.626.0476 sales@wishboneltd.com