

Parker Backless Bench

Model Number

PKSB-6
PKSB-5



The Parker backless version has the same modern leg design and beautiful contours as the rest of the Parker series without compromising on durable construction and longevity. Ideal in scenarios paired with the Parker Park Bench and Parker Table. Available with or without armrests and in a variety of lengths up to 12 feet.

Material Specifications

Marine Grade Aluminum Frame
Stainless Steel Hardware
Super Durable Powder Coating
100% Recycled Plastic Slats
Western Red Cedar
Accoya Modified Pine
Hardened Bamboo

Customized Solutions

Custom Powder Coating
(Setup Charges May Apply)
LED Lighting built into the seat.
Arms
Center arm
Custom Lengths from 3 ft to 40 ft
Skate blocks
INST-1 Stainless Steel Bolt-Down Kit

Recycled Content

Recycled Content by Weight: 68%
100% Recyclable

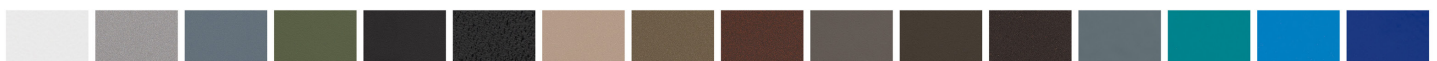
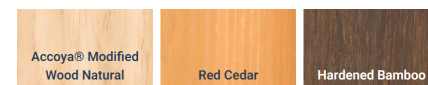
Product Dimensions

Total Height: 17.5 inches / 45 cm
Total Depth: 15 inches / 39 cm
Seat Height: 17.5 inches / 45 cm
Seat Depth: 15 inches / 39 cm
Length: 72 inches / 183cm
Weight: 65 lbs / 29.5 kg

100% Recycled Plastic Lumber Colours



Unstained Natural Wood Alternatives



OVER 30 POWDER COATING COLOURS *Premium powder colours incur a surcharge per item



Wishbone
site furnishings

#210-27090 Gloucester Way | Langley, BC CANADA V4W 3Y5
1.866.626.0476 sales@wishboneltd.com