

Mountain Classic Wide Body Bench

Model Number

MCWB-6 (6 ft)
MCWB-5 (5 ft)



This bench has all the attributes of the Mountain Classic Bench with additional roominess. The wide-body concept takes the accessibility and comfort to the next level. The angled armrests mimic a natural seating position allowing users a greater ease and comfort in sitting or getting up from the bench, which makes it great for seniors. The smooth contours of the seat and fluid angled back make this bench a delight to unwind and relax on. We manufacture our own castings used on the leg ends from 100% recycled aluminum car and truck rims.

Material Specifications

Marine Grade Aluminum Frame
Stainless Steel Hardware
Super Durable Powder Coating
100% Recycled Plastic Slats
Western Red Cedar
Accoya Modified Pine
Hardened Bamboo

Customized Solutions

Custom Powder Coating
(Setup Charges May Apply)
Gifting Program
(Custom Inset Bronze Plaques)
LED Lighting built into the seat.
Center arm
4 ft and 6 ft Lengths
INST-1.5 Stainless Steel Bolt-Down Kit

Recycled Content

Recycled Content by Weight: 90%
100% Recyclable

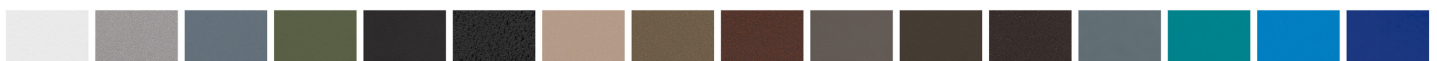
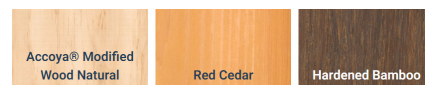
Product Dimensions

Total Height: 31 inches / 79 cm
Total Depth: 28 inches / 71 cm
Seat Height: 17 inches / 44 cm
Seat Depth: 18 inches / 46 cm
Length: 75.5 inches / 191 cm
Weight: 140 lbs / 64 kg

100% Recycled Plastic Lumber Colours



Unstained Natural Wood Alternatives



OVER 30 POWDER COATING COLOURS *Premium powder colours incur a surcharge per item



Wishbone
site furnishings

#210-27090 Gloucester Way | Langley, BC CANADA V4W 3Y5
1.866.626.0476 sales@wishboneltd.com